

Humax MX7 | Standard Installation

A quick guide to what's included in a standard installation.





Detached



Semi-detached



Mid-terrace house

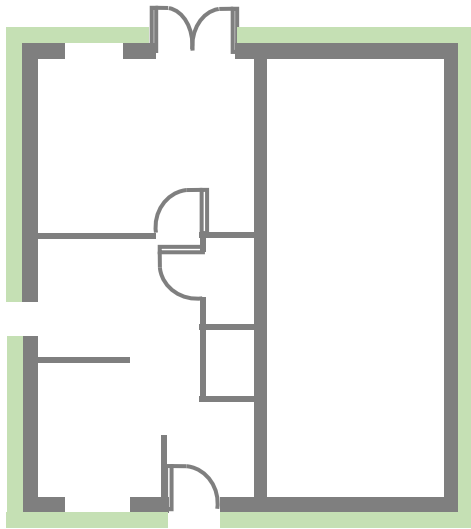
2

Electricity Meter Box location

Humax MX7 | Standard Installation

The following electricity meter box locations are included in the standard installation

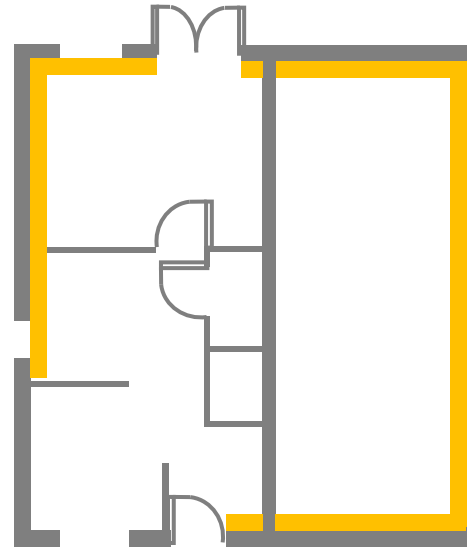
Electricity meter is positioned outside on an external wall.



Included



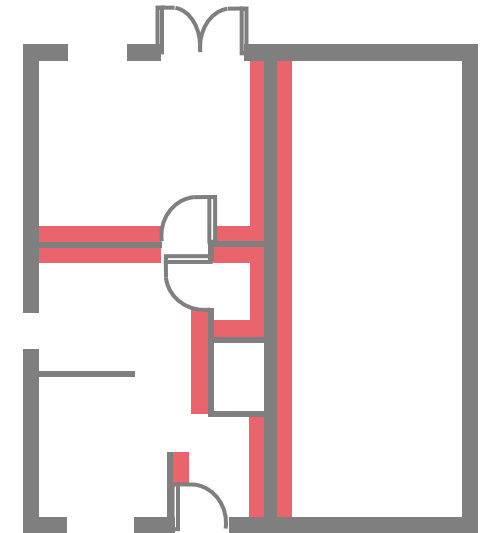
Electricity meter is positioned inside on an external wall.



Included



Electricity meter is positioned inside on an internal wall.

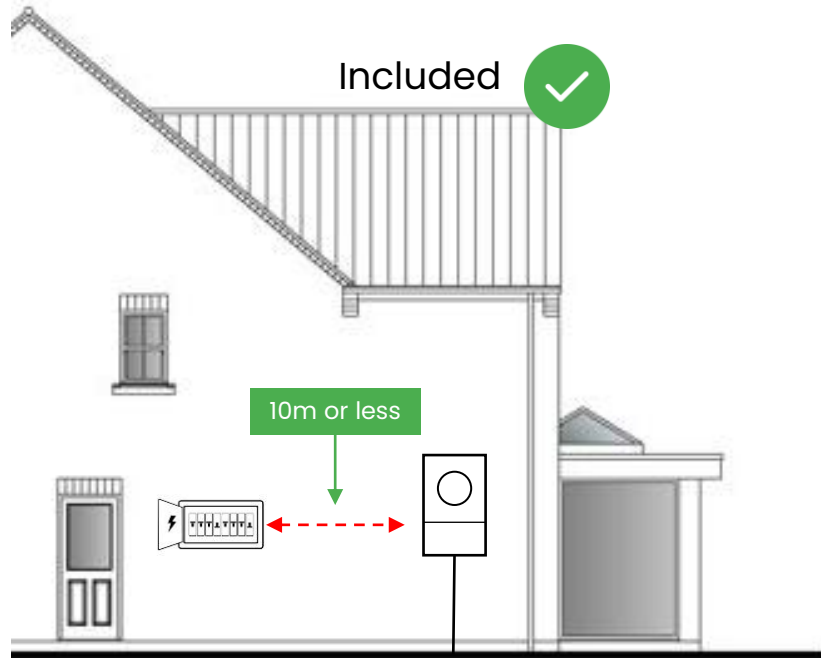


May need extra work



**Additional work may incur extra charges. You can still select the standard installation, and any additional work will be paid directly to the installer.*

3 Distance of charge point from the meter box



Distance of charge point from the meter box is less than 10 meters (About the length of a typical double-decker bus)



Distance of charge point from the meter box is more than 10 meters.

**Additional work may incur extra charges. You can still select the standard installation, and any additional work will be paid directly to the installer.*

Installation:

- Up to 10m cable installation, including data cable for load management
- Charger securely mounted to a brick, plaster, or other permanent wall
- Surge protection, DP Type A RCD, and required MCB installed.
- Connection from an existing DP isolator using a Henley block, or from a compliant consumer unit with spare non-RCD way

Setup & Handover:

- Testing, commissioning, and full setup of the charger
- Demonstration of charger operation
- Notification to DNO and Building Control, with electrical certification issued